

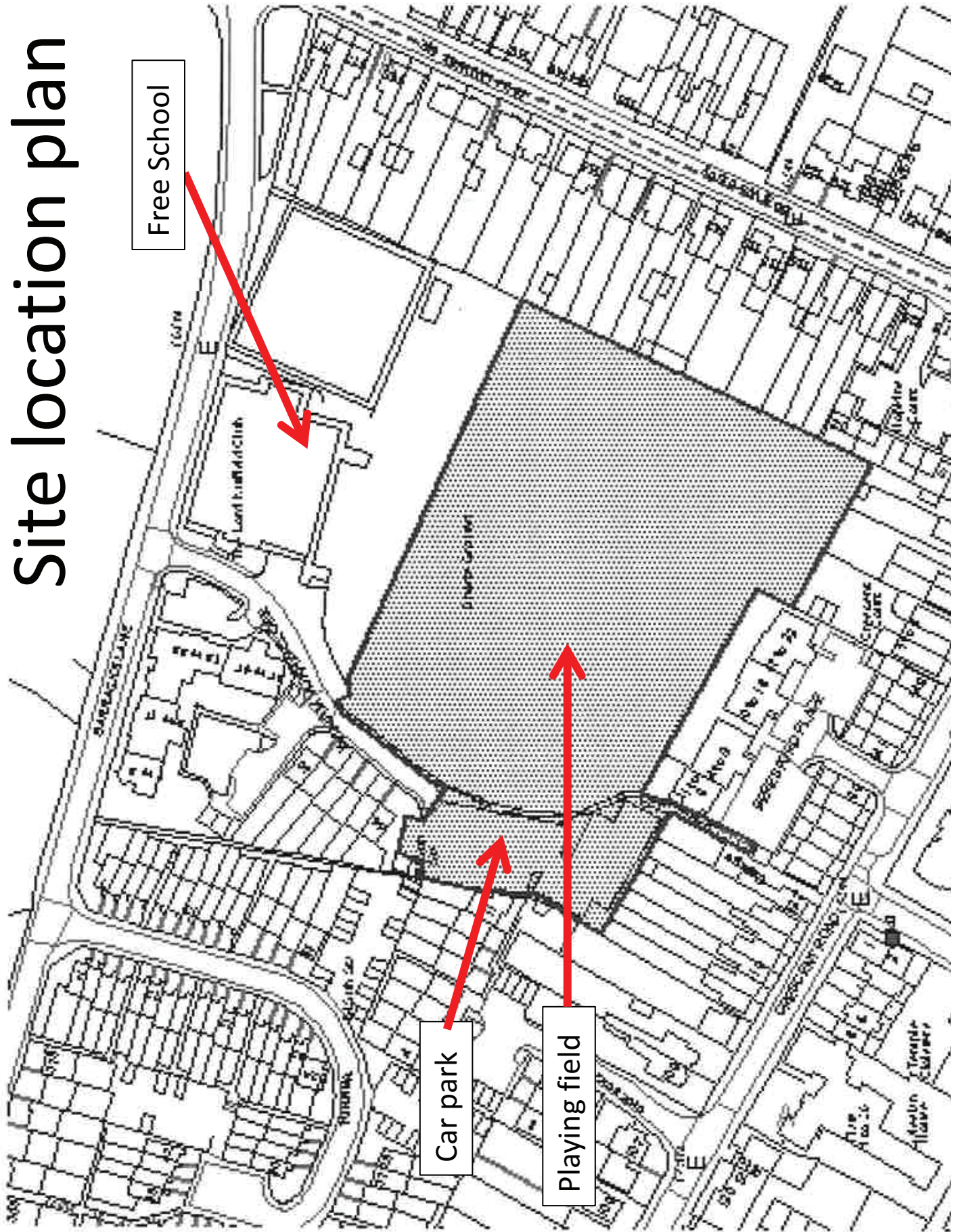
Welcome to the East Area Planning Committee

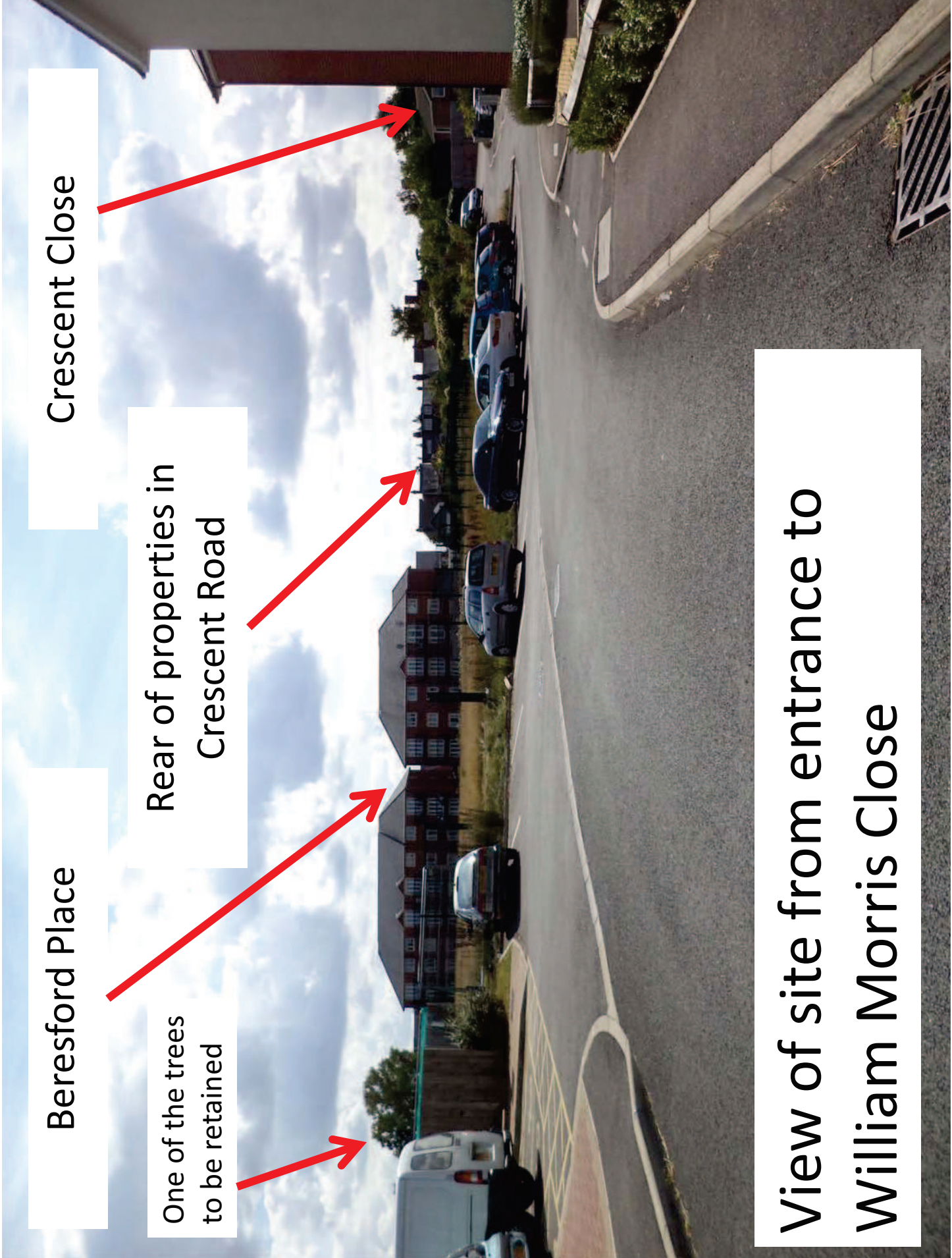
- **This planning committee meeting is held in public, but it is not a public meeting.**
- **There will be opportunity for the public to address the committee on each application.**
- **If you wish to speak for or against a planning application, you will need to have either requested it in advance, or fill out and hand in one of the available speaker forms.**
- **Information on meeting protocol and conduct at committee is set out in the Code of Practice.**
- **You can find a copy of the Code of Practice in the committee agenda, just before the first planning application report.**

www.oxford.gov.uk



Site location plan





View of site from entrance to William Morris Close



South east part of site – main housing area,
also showing retained trees



South west part of site – existing car park
proposed to be developed



**View north of William Morris Close and
former Lord Nuffield Club**

Proposed Site Plan 13/02500/OUT



Previously refused scheme 13/01906/FUL



Proposed development, view south-east up the site from near the entrance to William Morris Close



Proposed development, view south up the site from near the entrance to William Morris Close



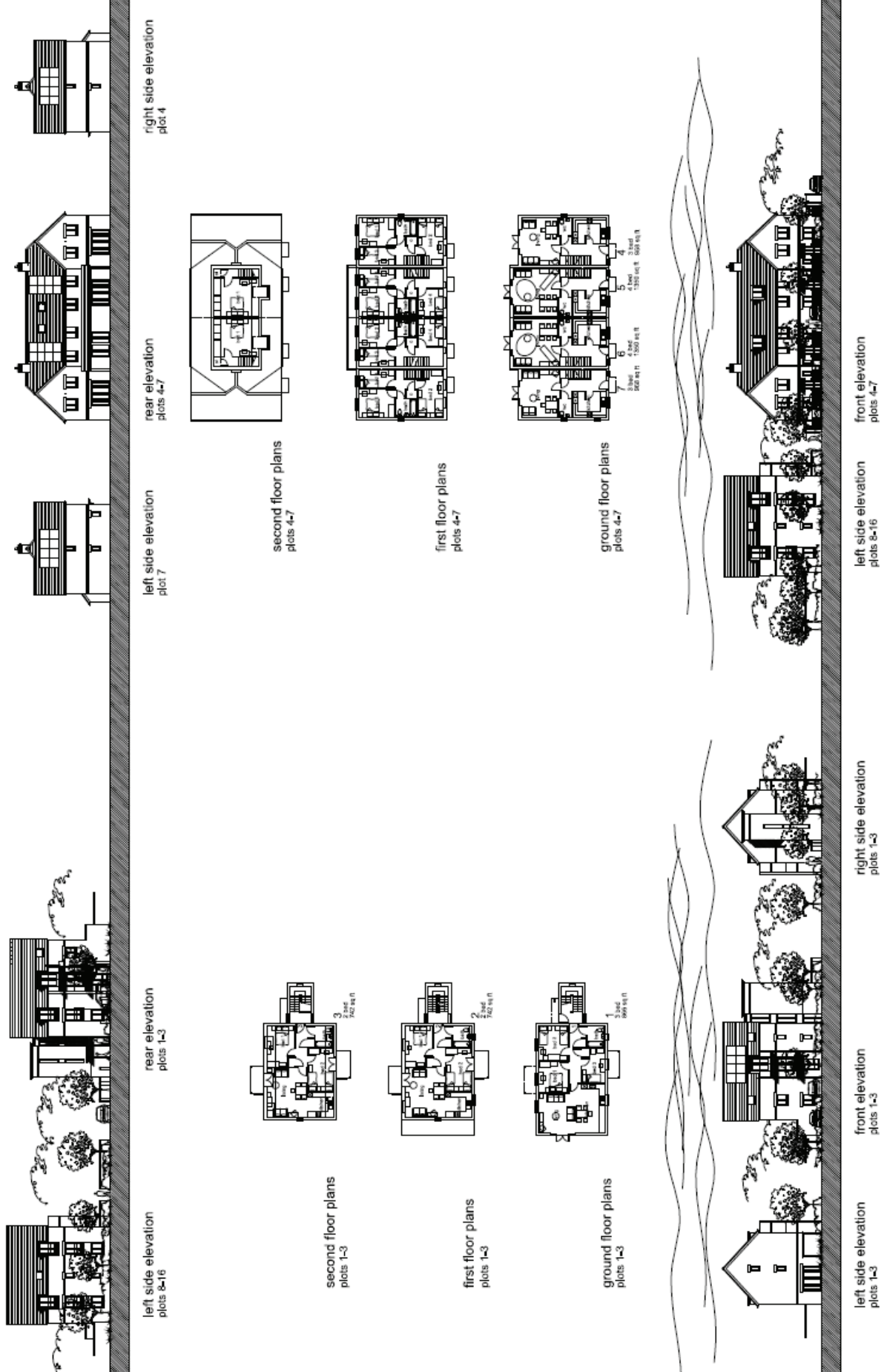
Proposed development, view east across the site
from existing properties in William Morris Close



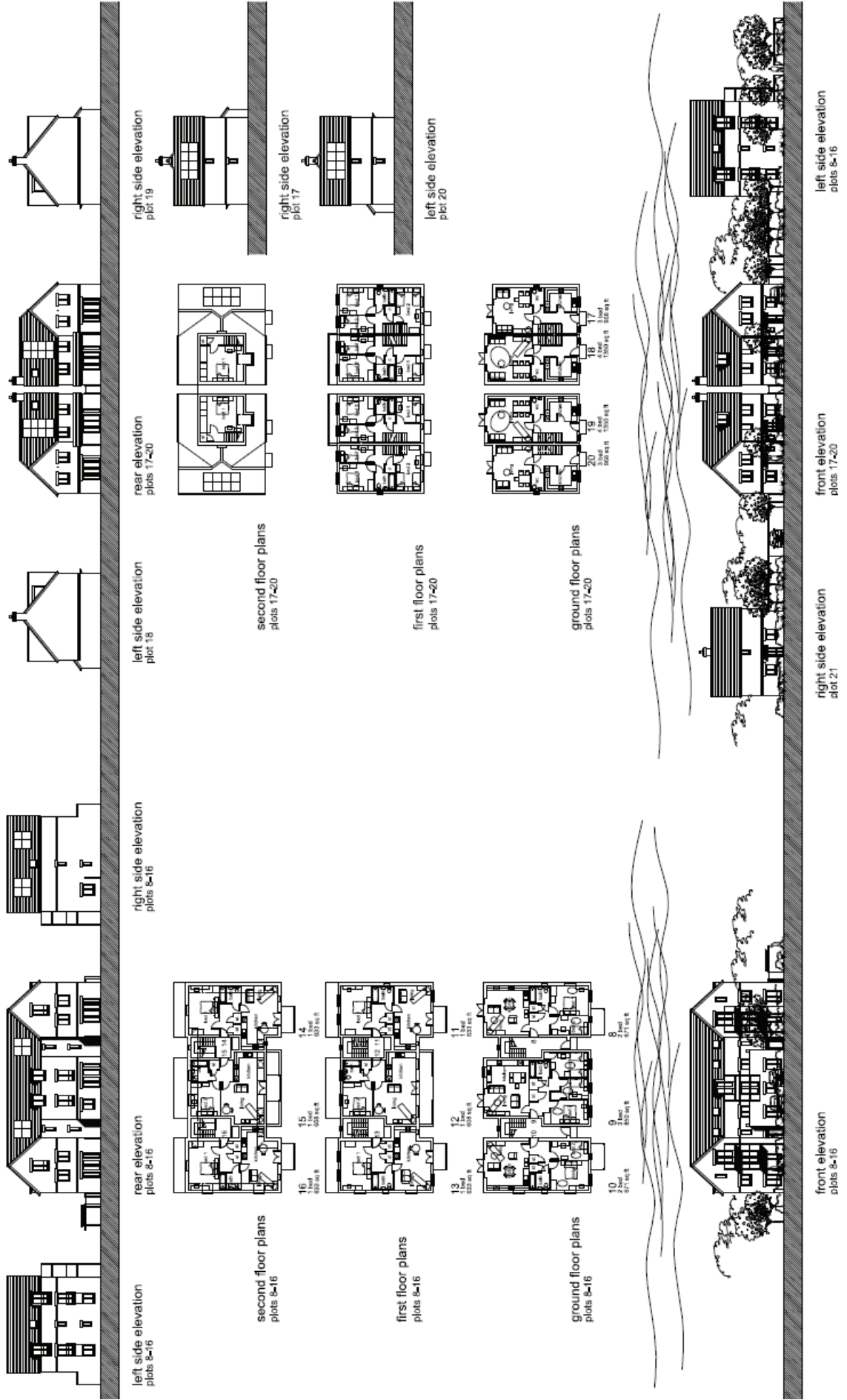
Proposed development, view north down the site from the south east corner of the site

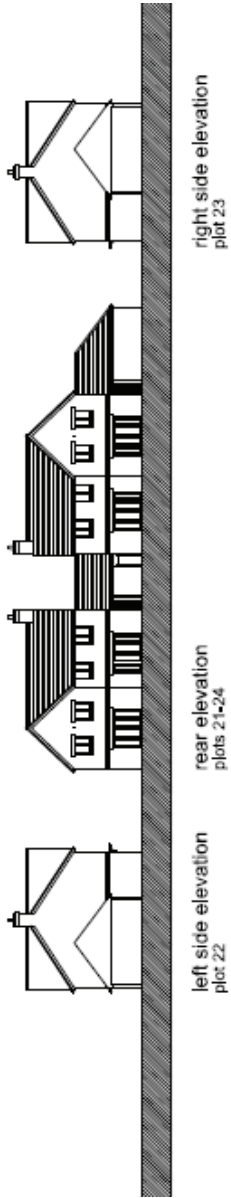


Proposed elevations and floor plans plots 1 - 7

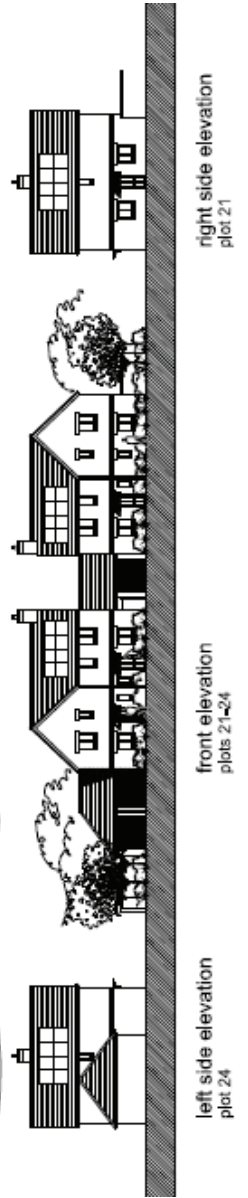
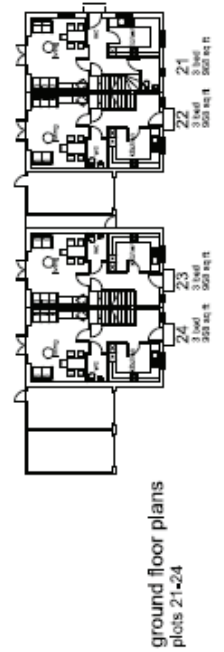
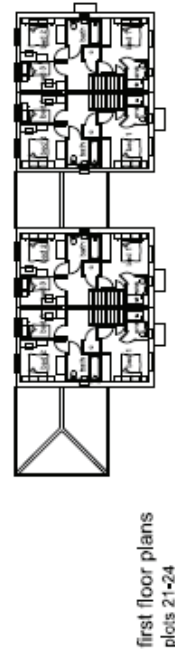


Proposed elevations and floor plans plots 8 - 20





Proposed elevations and floor plans plots 21 - 24



Proposed elevations and floor plans plots 25 - 40

The architectural drawings are organized into three main horizontal sections:

- Top Section (Elevations):**
 - Left side elevation plots 31-34:** Shows the left profile of plots 31, 32, 33, and 34.
 - Right side elevation plots 31-34:** Shows the right profile of plots 31, 32, 33, and 34.
 - Left side elevation plots 35-40:** Shows the left profile of plots 35, 36, 37, 38, 39, and 40.
 - Right side elevation plots 35-40:** Shows the right profile of plots 35, 36, 37, 38, 39, and 40.
- Middle Section (Floor Plans):**
 - First floor plans plots 25-40:** A row of 12 detailed floor plans for plots 25 through 36, including room labels like 'Living', 'Kitchen', 'Bed', and 'Bath'. Each plan includes dimensions (e.g., 25: 31.5 x 44.5 ft).
 - Second floor plans plots 25-40:** A row of 12 detailed floor plans for plots 25 through 36, including room labels like 'Bed', 'Bath', and 'Storage'. Each plan includes dimensions (e.g., 25: 31.5 x 44.5 ft).
 - Ground floor plans plots 25-40:** A row of 12 detailed floor plans for plots 25 through 36, including room labels like 'Living', 'Kitchen', 'Bed', and 'Bath'. Each plan includes dimensions (e.g., 25: 31.5 x 44.5 ft).
- Bottom Section (Elevations):**
 - Rear elevation plots 25-40:** Shows the rear profile of plots 25 through 40, featuring trees and landscaping.
 - Front elevation plots 25-40:** Shows the front profile of plots 25 through 40, featuring trees and landscaping.